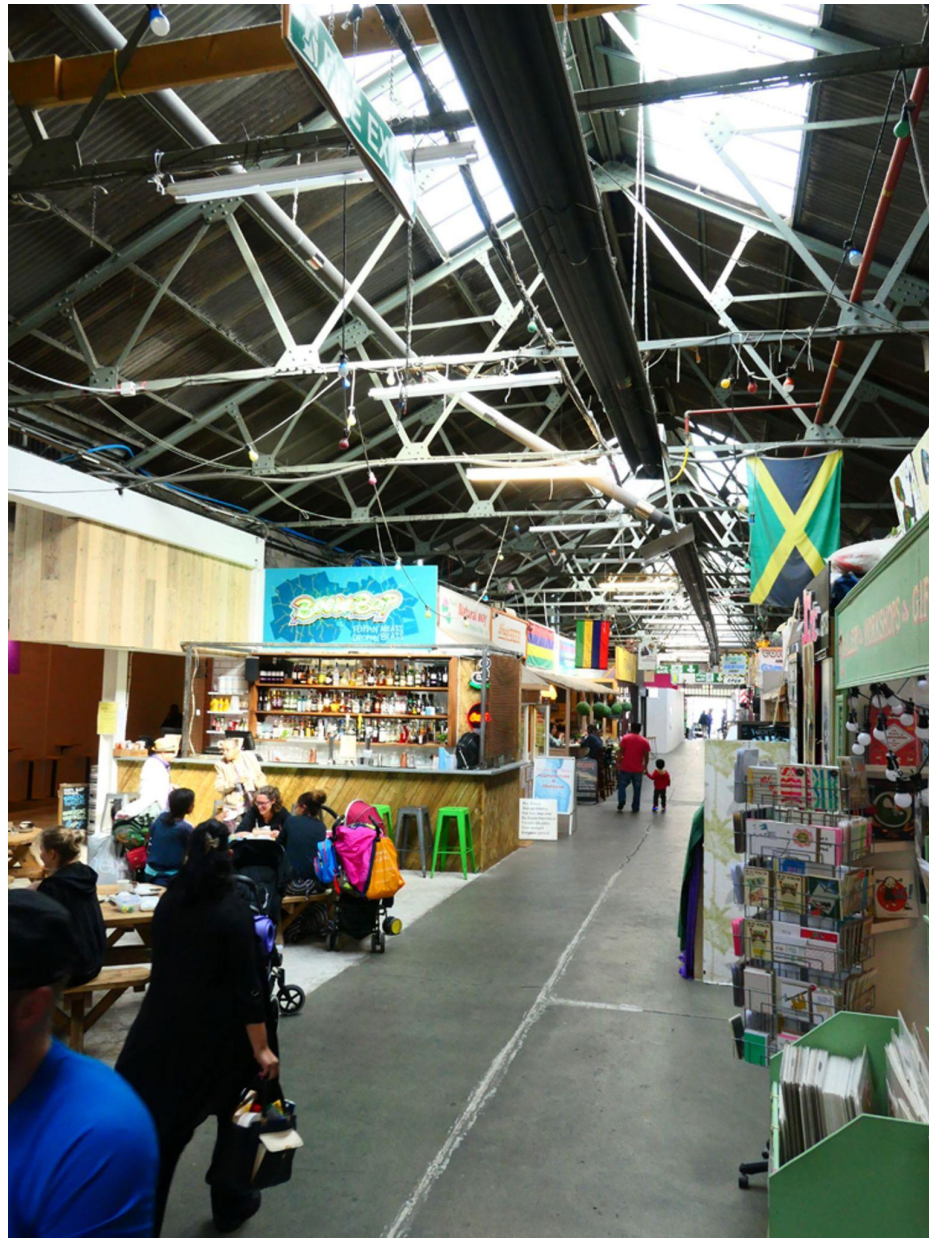


Our Beautiful Neighbourhood

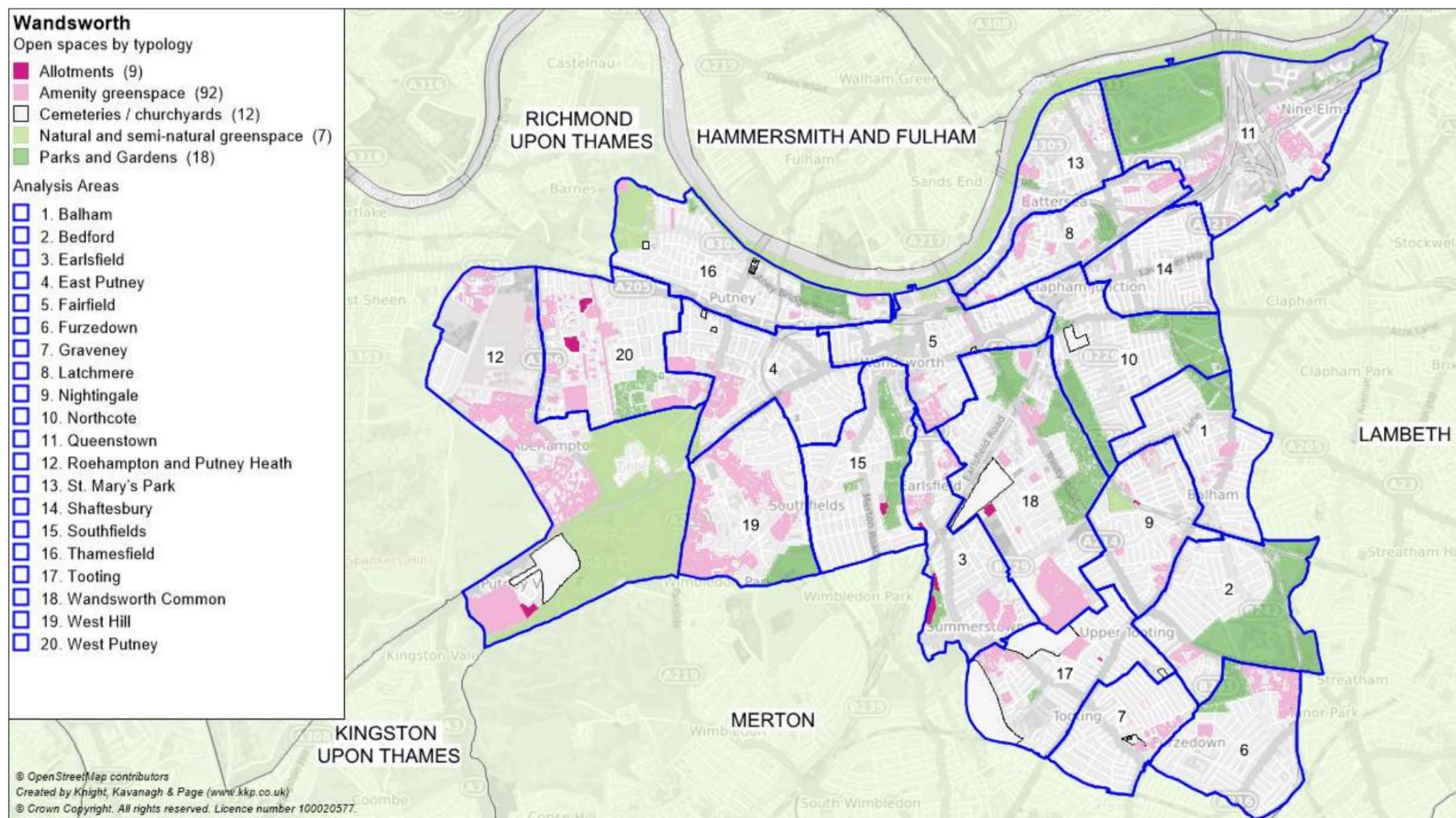


Your artworks will be displayed across Wandsworth



You will be invited to come and see the finished artworks and can invite family and friends to see what you have created too.

We are going to explore the amazing wildlife in our borough...



Wandsworth is home to 14 different habitats and over 4,000 different species.

We share our city with wildlife that live all around us...



...in the gardens and green spaces around houses.



...in parks and playing fields,



.. in allotments.



...even in churchyards and burial sites.

But Wandsworth also has some very special habitats



Acid Grasslands (Like Tooting Common)



Neutral (wildflower) grasslands (like Wimbledon Common)



Heathland (like Putney Heath)



Woodlands (like Tooting Common)



Rivers (like the Wandle)



Tidal Rivers (Like the River Thames)



Lakes and Ponds (Like Wandsworth Common Lake)



Reedbeds (Like Tooting Common Amphibians Pool)

Botanical illustration examples

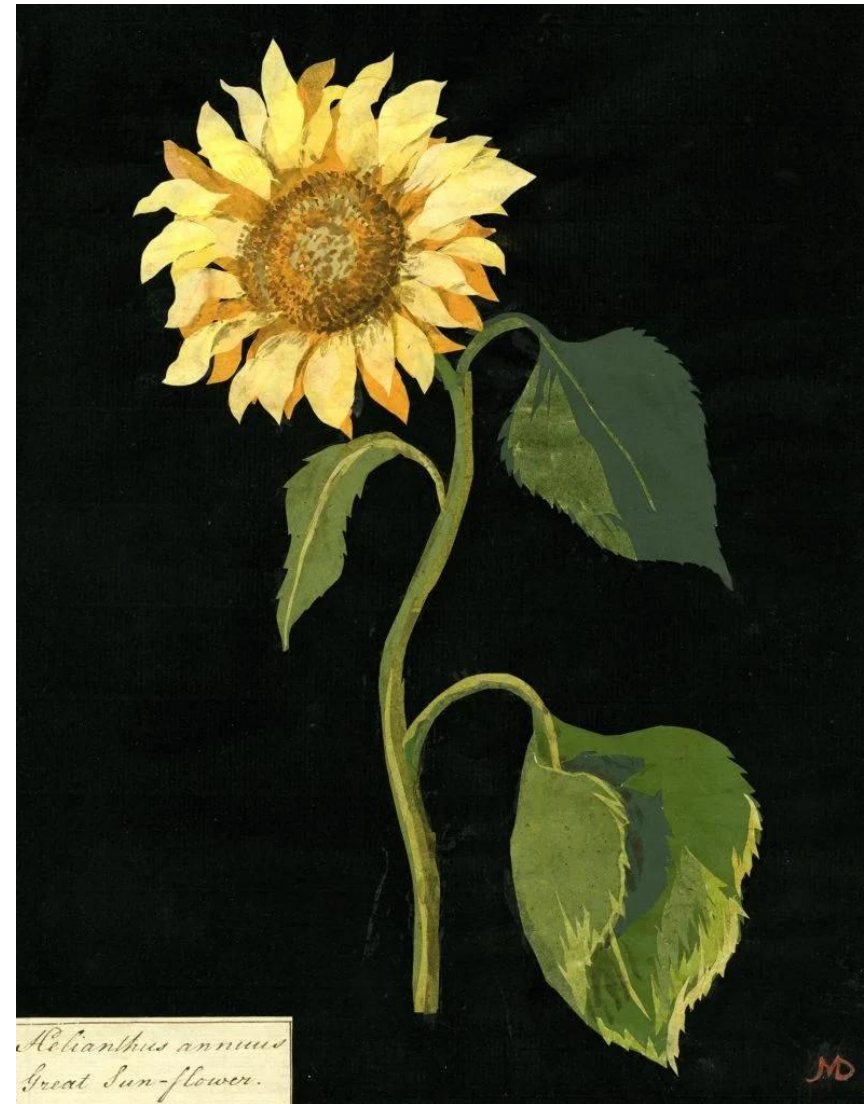




小野蘭齋 撰
久保弘道 校
加藤竹齋 書



Inspiring collage artists



Mary Delany

LEFT: Portrait of Mary Delany painted by John Opie
RIGHT: Mary Delany, *Helianthus Annuus* (Great Sun-flower), 1772–1782



Mary Delany

LEFT: Mary Delany, '*Pancratium maritimum* (Hexandria monogynia),' Sea daffodil, 1778. British Museum.

RIGHT: Mary Delany, '*Rhododendron Maximum*', 1778.



Matisse at the Hôtel Régina, Nice, c. 1952



Henri Matisse

LEFT: Henri Matisse in his studio

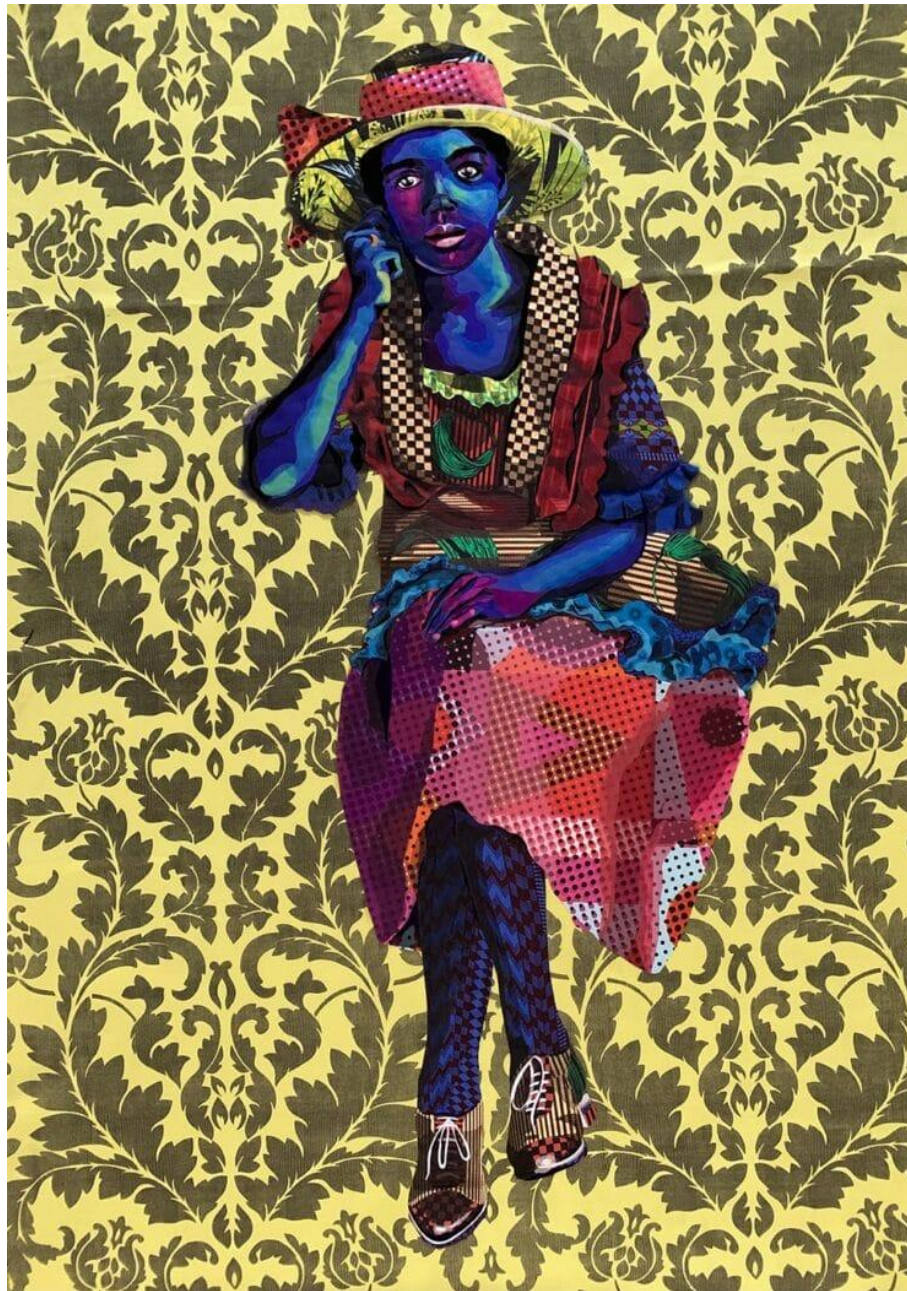
RIGHT: Henri Matisse, 'The Sheaf', 1953



Bisa Butler

LEFT: Portrait of Bisa Butler in front of one of her artworks by John Butler

RIGHT: Bisa Butler, 'Dear Mama (2019)', quilted and appliquéd cotton, wool and chiffon, 53 x 78 inches



Bisa Butler

LEFT: Bisa Butler, "Daughter Of The Dust," 2020, cotton, silk, wool and velvet quilted and appliqué, 58 x 83 x 2 inches
RIGHT: Detail of "Daughter Of The Dust"



Romare Bearden

LEFT: Portrait of Romare Bearden (from the Romare Bearden Foundation collection)

RIGHT: Romare Bearden, 'Junction Piquette', fabric collage on canvas



Romare Bearden, *The Bayou*, 1979, collage, ink, pencil, and acrylic on fiberboard, 6" x 9".
© Estate of Romare Bearden. Courtesy of DC Moore Gallery, New York



Romare Bearden, *'Eden Midnight'* 1988, collage and watercolour, 30 x 40 inches



Chantal Joffe

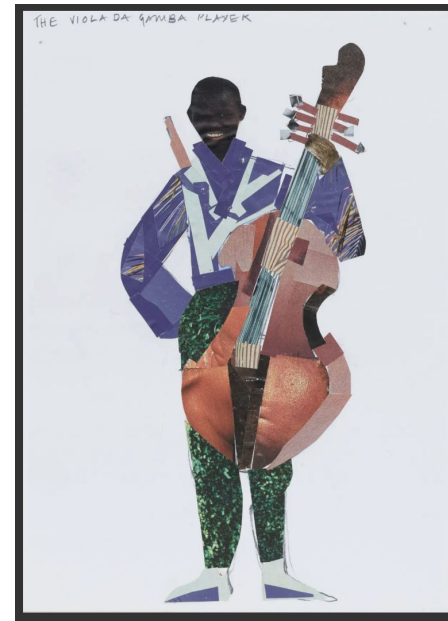
LEFT: Chantal Joffe, Study for 'A Sunday Afternoon in Whitechapel' IX, 2017

MIDDLE: Chantal Joffe, 'A Sunday Afternoon in Whitechapel XVIII' (2023)

RIGHT: Chantal Joffe in her studio



'A Sunday Afternoon in Whitechapel' by Chantal Joffe



Lubaina Himid

LEFT: Portrait of Lubaina Himid by Denise Swanson
RIGHT: Lubaina Himid, 'Naming the Money' paperworks 2004



'A Fashionable Marriage' by Lubaina Himid (installed at Tate Modern)

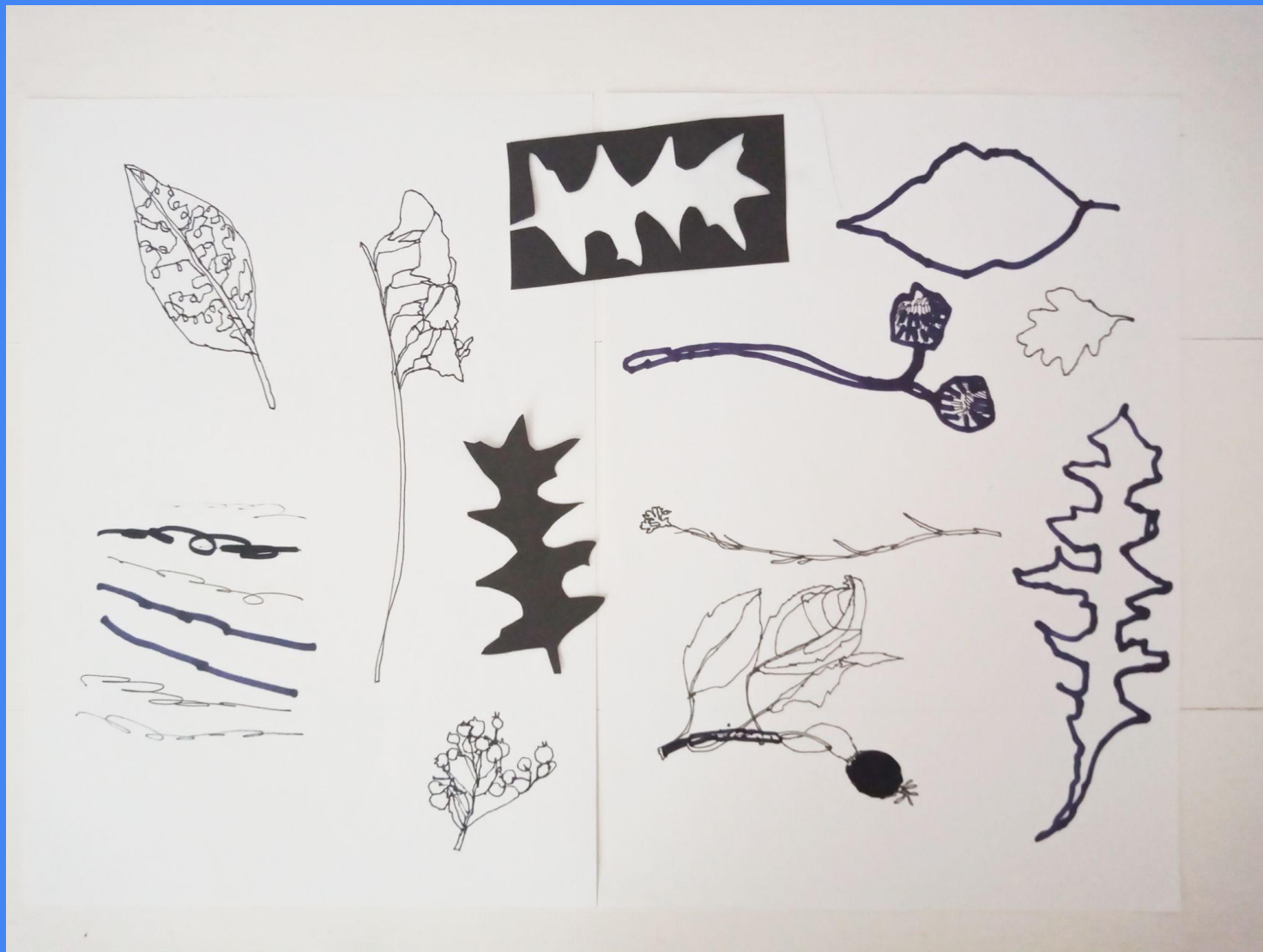


LEFT: Portrait of Lubaina Himid



RIGHT: Lubaina Himid, 'Naming the Money', 100 painted plywood figures and audio (installed at Spike Island, Bristol)

Workshop activity step-by-step



Step 2:
Warm up drawings!



Step 3:
Select some
coloured paper.



Step 4:
Start to cut out your
shapes. Be bold
with your scissors -
no need to draw
first.





Step 5:
Build up your
collage with more
shapes and
colours.
Remember, your
shapes can
overlap.



Step 6:
Carefully glue the
pieces of your
collage together.

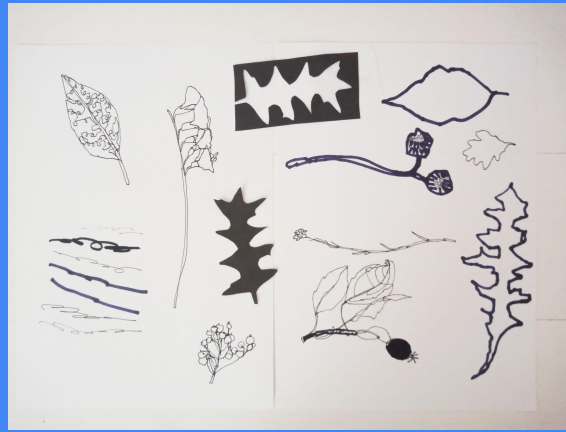


Step 7:

When your collage is dry, remember to write your name, class and school on the back in pencil. And don't stick your collage down onto any background paper!



Step 1: Lay your discoveries out in the middle of the table



Step 2: Warm up drawings!



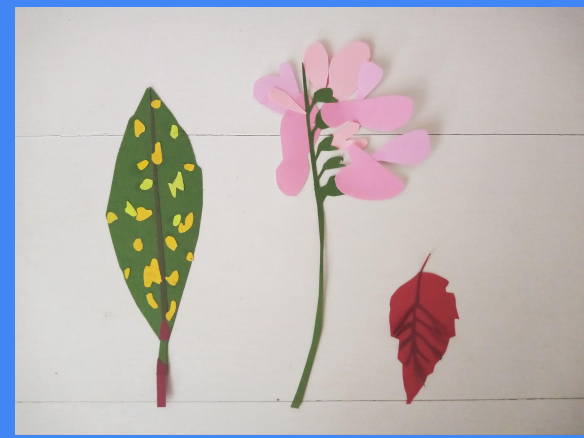
Step 3: Select some coloured paper.



Step 4: Start to cut out shapes. Be bold with your scissors - no need to draw first.



Step 5: Build up your collage with more shapes and colours. Shapes can overlap.



Step 6: Carefully glue the pieces of your collage together.

Step 7: When your collage is dry, remember to write your name, class and school on the back in pencil. Don't stick your collage down onto any background paper - it's going to join other collages to become one big artwork!



Collage examples



Collage examples

Our Beautiful Neighbourhood has been commissioned by Wandsworth Council and the Royal College of Art as part of the Welcome to Wandsworth schools programme for London Borough of Culture 2025.

This toolkit was created by Vanessa Rolf and Hannah Coulson, lead artists for *Our Beautiful Neighbourhood*.



Royal College of Art
Postgraduate Art & Design



MAYOR OF LONDON

London Borough of Culture is a Mayor of London initiative.



Supported using public funding by
**ARTS COUNCIL
ENGLAND**

